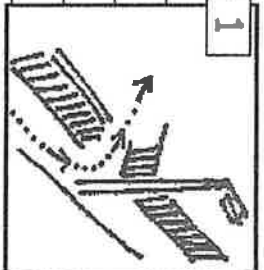
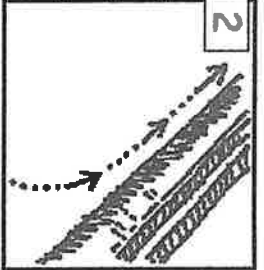


start

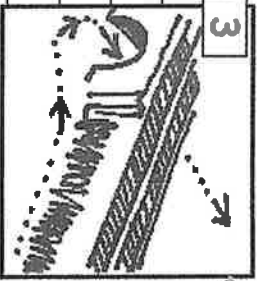
turn left off the road on to the footpath by the concrete lamppost



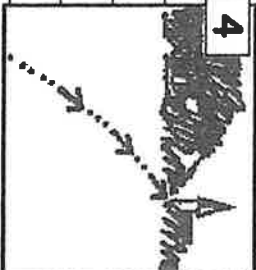
follow the footpath it will run next to a railway line



the footpath slopes down and you turn right under the railway bridge



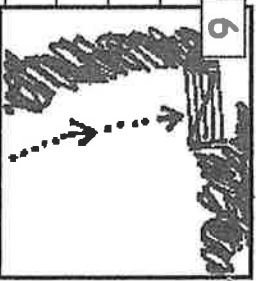
now the path crosses a common walk towards the church spire



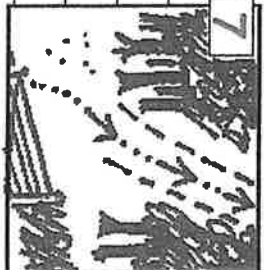
you will see a stile in the hedge - climb over the stile and turn left



walk along by the hedge until you reach a large 5-bar gate



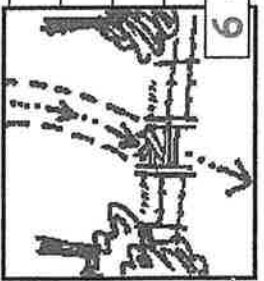
go through the gate into the wood keep to the path



the path crosses a small stream and then it begins to climb uphill



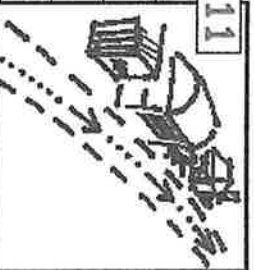
At the top of the hill there is a fence with a stile - go over and follow the path



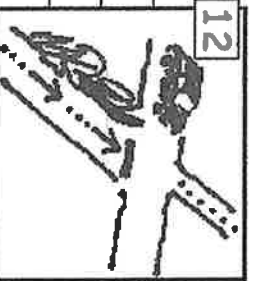
the path crosses a large field - aim for the old bath in the corner of the field



then go along the track past the farm buildings - tractors use this path!



be careful! at the end of the track you have to cross a busy lane



© The Duke of Edinburgh's Award 2003

pictogram route maps

handout master 20a

© The Duke of Edinburgh's Award 2003

