

# Early Works Notification

## Public Rights of Way Closures

High Speed Two (HS2) is the new high speed railway for Britain. We are continually reviewing the works on our construction sites in line with Government and Public Health England (PHE) advice on dealing with COVID-19. The Government's current strategy makes it clear that construction activity can continue as long as it complies with this guidance. Please be assured that only sites that can operate within the guidelines are operational. All sites will remain under constant review. You can sign up for regular updates in your local area at [www.hs2inbucksandox.co.uk](http://www.hs2inbucksandox.co.uk)

### What are we doing?

As we progress our works, we will need to close some footpaths in the areas around Great Missenden, Wendover Dean and The Lee in order to support the construction of our internal haul road and the HS2 rail line. This document will show you the intended closures, durations and which footpaths we intend to keep open to still allow for connectivity.

### When will these works take place?

The works will commence from April. Below are the footpath locations and intended dates of when the closures will be in place:

- WEN38/1 and TLE/2 - 17<sup>th</sup> April 2021 – Autumn 2026
- TLE/5 – 22<sup>nd</sup> April 2021 – Autumn 2026
- WEN/36/2 – 1<sup>st</sup> May 2021 – Autumn 2026
- GMI/12 and GMI/13 – 30<sup>th</sup> May 2021 – Autumn 2026
- WEN39/1, WEN39/2 and WEN40 – March to Autumn 2026
- **WEN37/1 & TLE/3 (Bowood Lane) – To remain open with a diversion**
- **GMI/2 – To remain open with a diversion**

The footpaths that we are closing will have notices and signposted local diversions in place where necessary. Where diversions are in place there will be some marshalled crossing points when they cross our works area to ensure the safety of all footpath users.

**If you have a question about HS2 or our works, please contact our HS2 Helpdesk team on 08081 434 434 or email [hs2enquiries@hs2.org.uk](mailto:hs2enquiries@hs2.org.uk)**

## Notification



### Duration of works

Works will commence in April 2021

Normal working hours:  
Monday to Friday  
8.00am – 6.00pm

Saturdays  
8.00am – 1.00pm

Our contractors may be on site for one hour's start-up and shutdown either side of these times.

### What to expect

Varied activities with both quiet and busier periods.

Localised footpath closures and diversions will be in place.

### What we will do

Manage any environmental impacts.

Respond promptly to any complaints and take appropriate action.

Take care to respect the community.

# Early Works Notification Public Rights of Way Closures

[www.hs2.org.uk](http://www.hs2.org.uk)

Notification

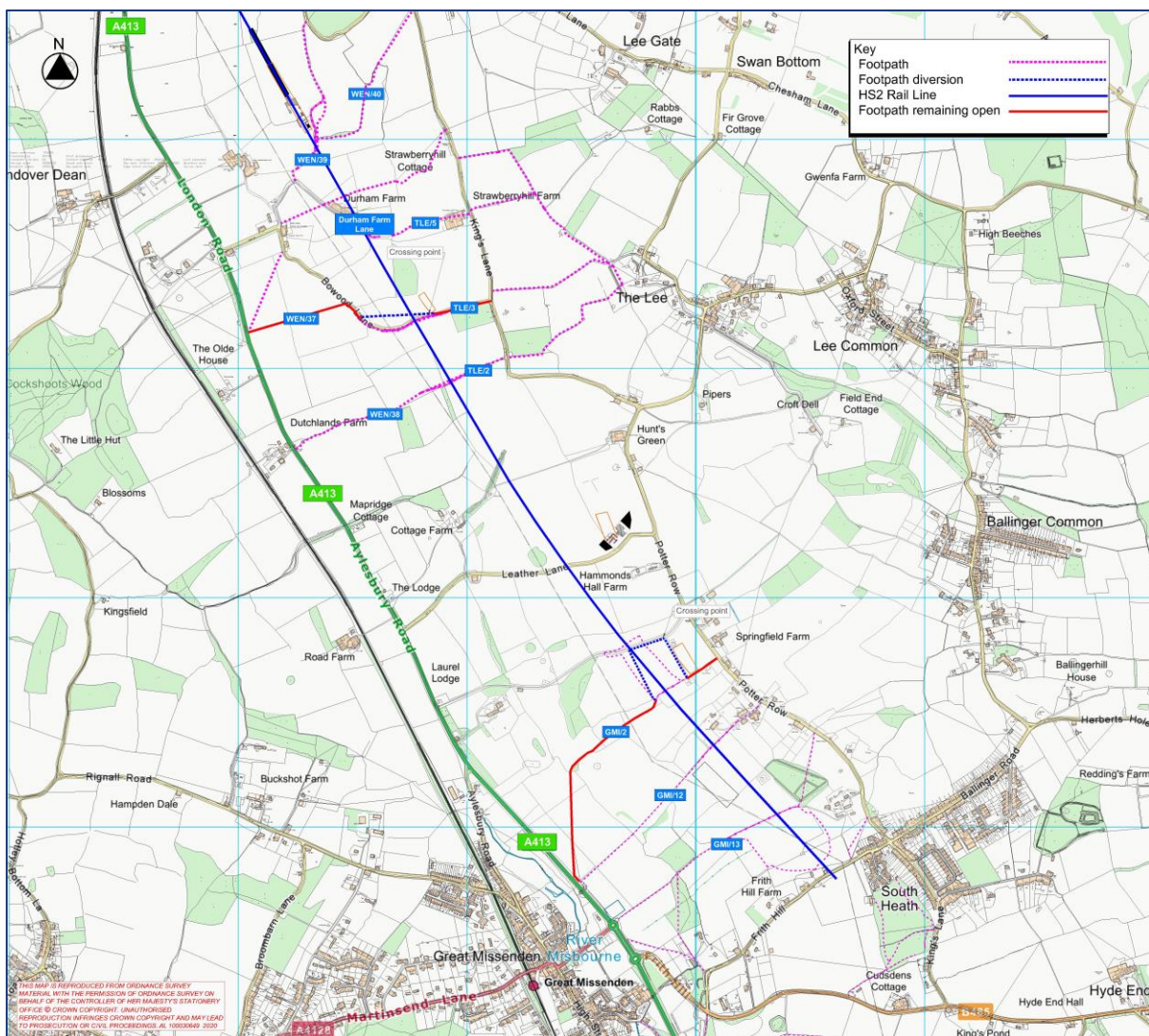


## Where will the works take place?

The majority of the works will be along the HS2 train line. Where possible we intend to only close a portion of a footpath, however this not always possible and, in some cases, we will have the need to close the entire length of the path. The footpath closures will be signposted however, a map below shows the paths affected and the closure locations.

GMI/12 and GMI/13 are required to be closed due to the construction of the north portal of the Chiltern Tunnel and the excavation work that must be undertaken for the construction of the cutting that leads towards Leather Lane.

The map below indicates the existing footpath locations from South Heath up to Wendover Dean, the closure points and the intended diversions.



Contact our HS2 Helpdesk team on **08081 434 434**

# Early Works Notification Public Rights of Way Closures

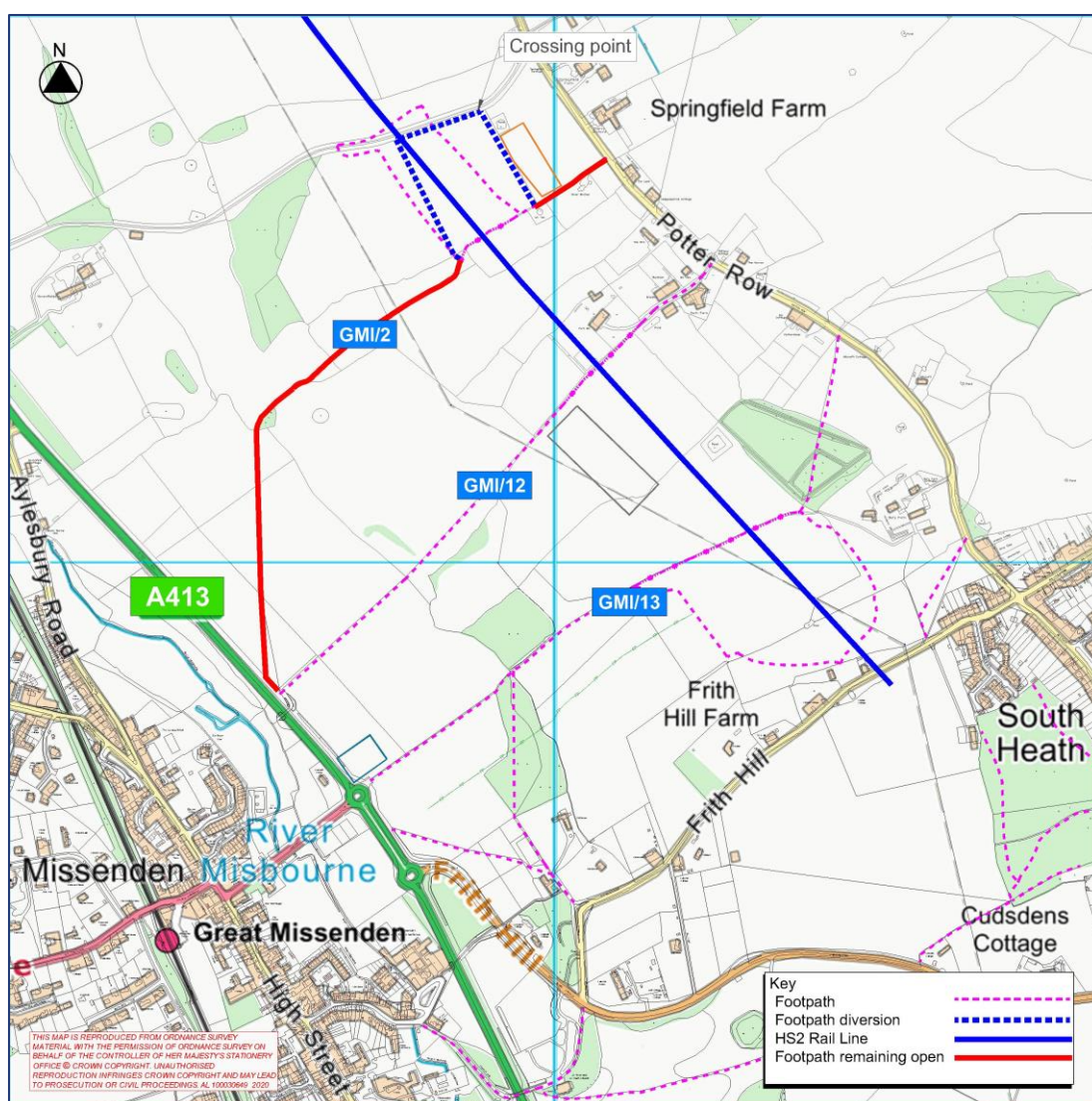
Notification



[www.hs2.org.uk](http://www.hs2.org.uk)

TLE/5, WEN/36, WEN39/1, WEN39/2 and WEN/40 need to be closed for the construction of the Wendover Dean Viaduct, a 16m high and 450m long viaduct due to the fact that it will cross each of these paths.

In both, Wendover Dean and Great Missenden areas, we are required to close the paths for the safety of the public. Our sites will contain large plant and machinery, construction vehicles, HGV's and large articulated construction site vehicles which is why it is important to segregate our site from the public.



The map above shows that GMI/2 will remain open throughout the construction period and a diversion will be introduced to enable connectivity to the east and west of our site. The diversion will take walkers from GMI/2 in a northerly direction to join the Havenfield track, where a bridge will allow people to cross a portion of the site safely. A marshalled crossing point will also be in place to enable the public to pass through our internal haul road safely and re-join GMI/2 near Potters Row.

Contact our HS2 Helpdesk team on **08081 434 434**

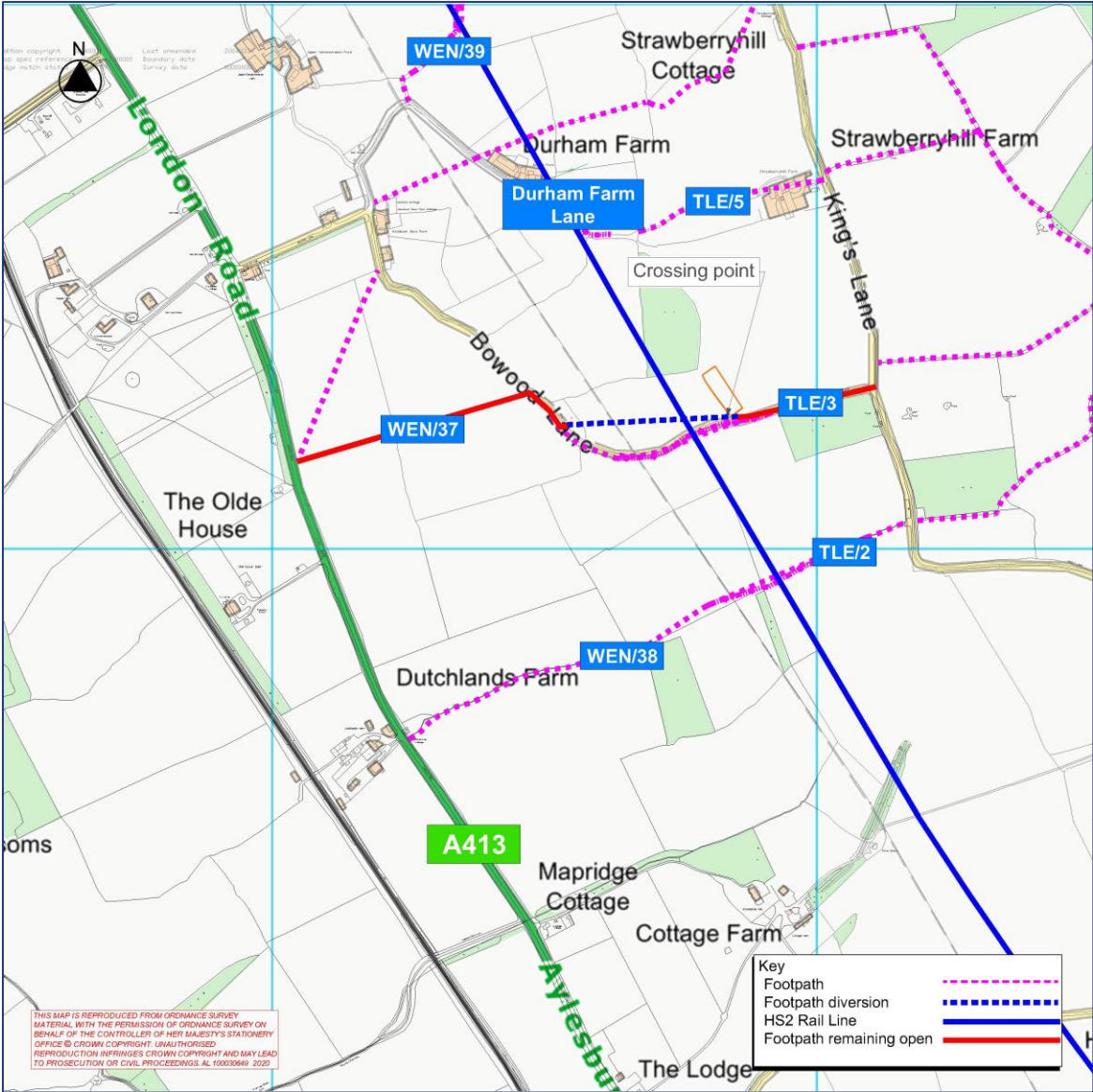
# Early Works Notification Public Rights of Way Closures

[www.hs2.org.uk](http://www.hs2.org.uk)

Notification



Footpaths TLE/3 and WEN/37 which incorporate Bowwood Lane will remain open throughout the construction of the project but will require a short temporary diversion through a field to allow for the construction of the Bowwood Lane overbridge. This diversion will also include a marshalled crossing point for the safety of the public before walkers return to the public right of way. Walkers on The Chiltern Way will have signage diverting them to these footpaths and back again on the east and west sides of the site.



Contact our HS2 Helpdesk team on **08081 434 434**

# Keeping you informed

We are committed to keeping you informed about work on HS2. This includes ensuring you know what to expect and when to expect it, as well as how we can help.

## Residents' Charter and Commissioner

The Residents' Charter is our promise to communicate as clearly as we possibly can with people who live along or near the HS2 route.

[www.gov.uk/government/publications/hs2-residents-charter](http://www.gov.uk/government/publications/hs2-residents-charter)

We also have an independent Residents' Commissioner whose job is to make sure we keep to the promises we make in the Charter and to keep it under constant review. Find reports at:

[www.gov.uk/government/collections/hs2-ltd-residents-commissioner](http://www.gov.uk/government/collections/hs2-ltd-residents-commissioner)

You can contact the Commissioner at: [residentscommissioner@hs2.org.uk](mailto:residentscommissioner@hs2.org.uk)

## Construction Commissioner

The Construction Commissioner's role is to mediate and monitor the way in which HS2 Ltd manages and responds to construction complaints. You can contact the Construction Commissioner by emailing: [complaints@hs2-cc.org.uk](mailto:complaints@hs2-cc.org.uk)

## Property and compensation

You can find out all about HS2 and properties along the line of route by visiting:

[www.gov.uk/government/collections/hs2-property](http://www.gov.uk/government/collections/hs2-property)

Find out if you're eligible for compensation at:

[www.gov.uk/claim-compensation-if-affected-by-hs2](http://www.gov.uk/claim-compensation-if-affected-by-hs2)

## Holding us to account

If you are unhappy for any reason you can make a complaint by contacting our HS2 Helpdesk team. For more details on our complaints process, please visit our website:

[www.hs2.org.uk/how-to-complain](http://www.hs2.org.uk/how-to-complain)

## Contact Us

Contact our HS2 Helpdesk team all day, every day of the year on:

 Freephone **08081 434 434**

 Minicom **08081 456 472**

 Email **[hs2enquiries@hs2.org.uk](mailto:hs2enquiries@hs2.org.uk)**

Write to:

**FREEPOST**

**HS2 Community Engagement**

Website **[www.hs2.org.uk](http://www.hs2.org.uk)**

To keep up to date with what is happening in your local area, visit:

**[www.hs2inyourarea.co.uk](http://www.hs2inyourarea.co.uk)**

**Please contact us if you'd like a free copy of this document in large print, Braille, audio or easy read. You can also contact us for help and information in a different language.**

HS2 Ltd is committed to protecting personal information. If you wish to know more about how we use your personal information please see our Privacy Notice <https://www.gov.uk/government/publications/high-speed-two-ltd-privacy-notice>

**Reference number:** 1MC12-EKF-ER-NTE-CS03-000001

High Speed Two (HS2) Limited, registered in England and Wales.  
Registered office: Two Snowhill, Snow Hill Queensway, Birmingham B4 6GA.  
Company registration number: 06791686. VAT registration number: 181 4312 30.

Contact our HS2 Helpdesk team on **08081 434 434**