

Route to accreditation: step-by-step guide

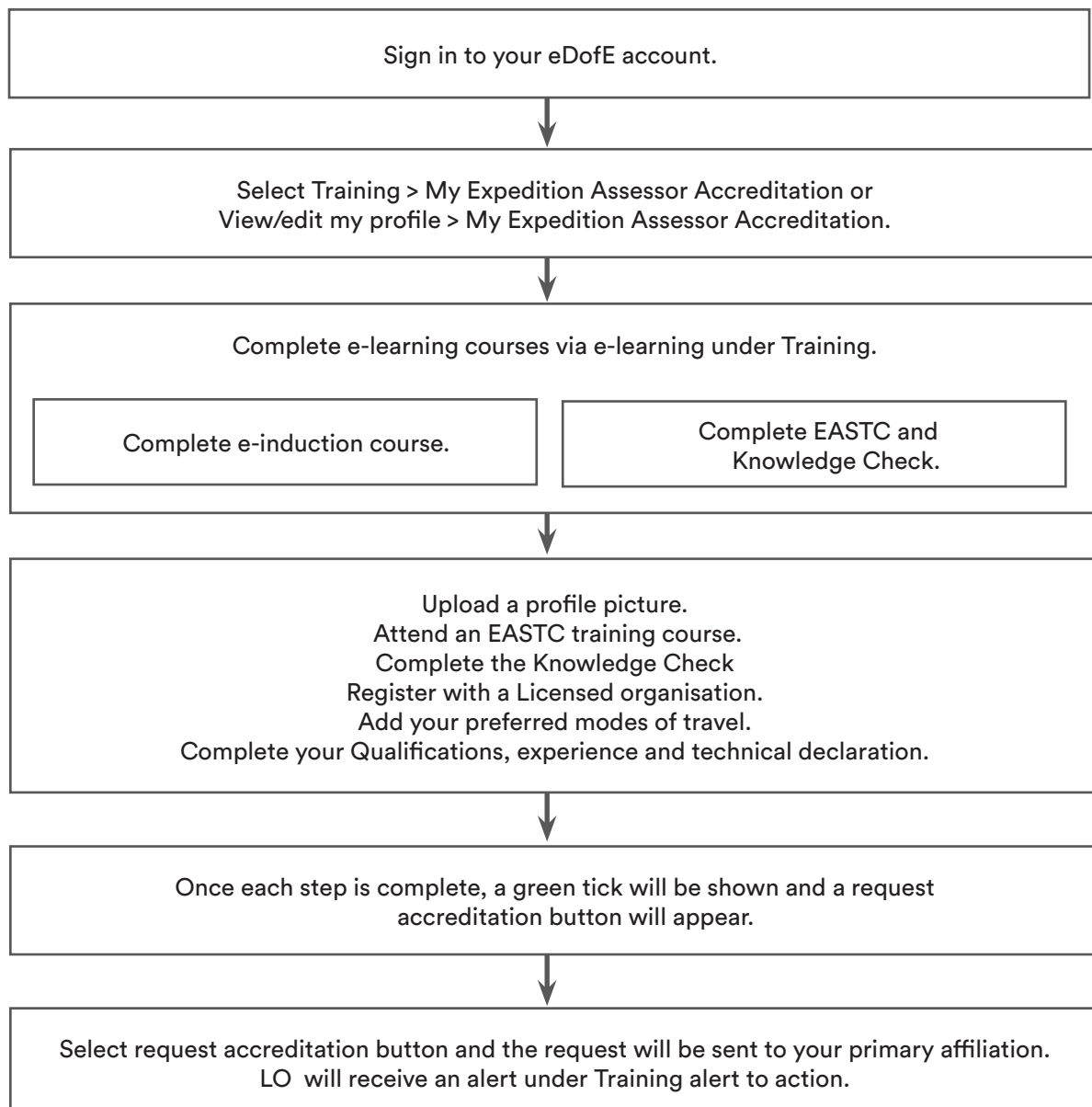
When an Assessor has been approved on to a DofE course eDofE account is created. They will receive their login details via email with their course confirmation.

If Assessors have forgotten their username, Licensed Organisation (LO) users can find their usernames under Training> Training search and filter the delegates account using the [Location or Details] filter. Select the [Download to spreadsheet] button to download the information. The username will be on the spreadsheet.

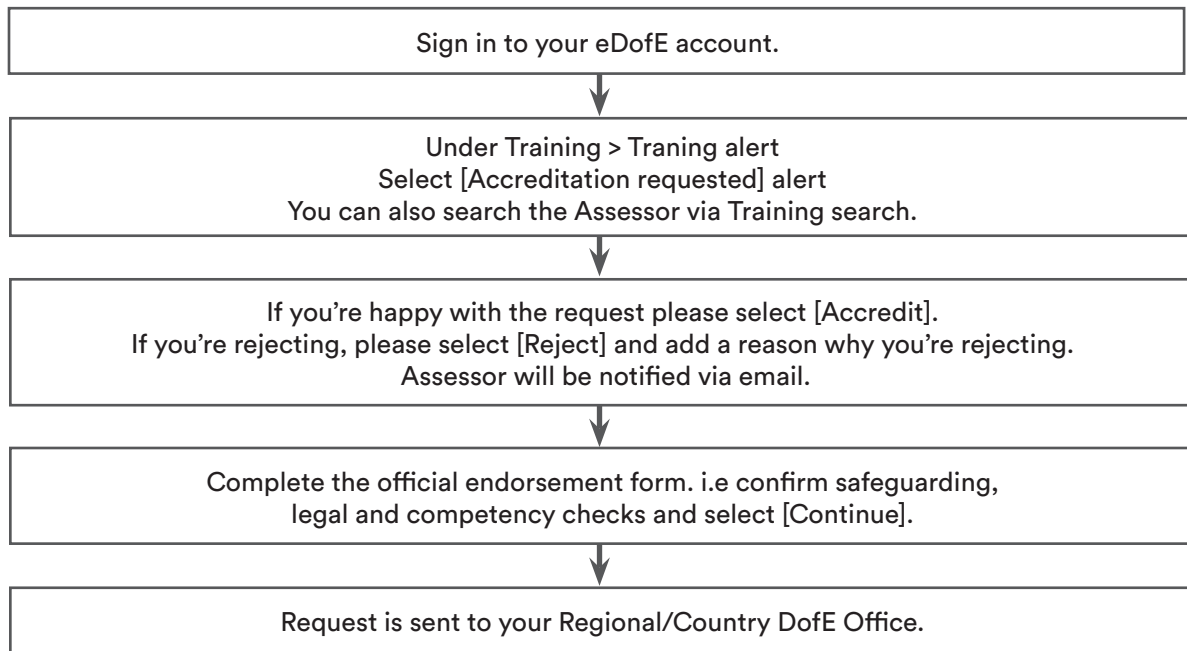
Assessors have the ability to:

- Update their contact details
- Access OS Mapping
- View their accreditation and affiliation details
- End their affiliations
- Request accreditation/reaccreditation

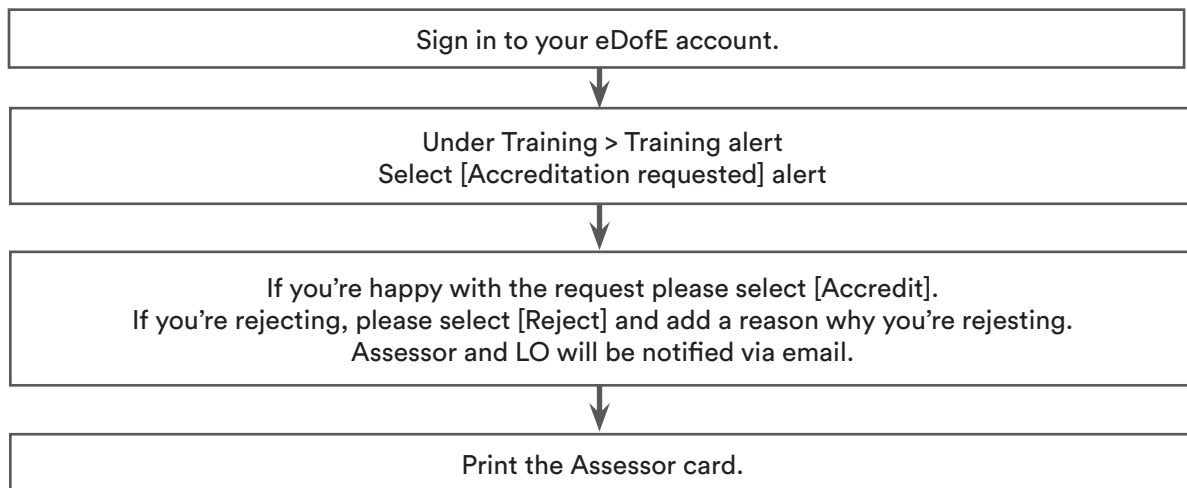
Assessors



Licensed Organisations



Head Office



Guidance on the accreditation of Expedition Assessors

An applicant must have completed the DofE's Assessor's training within the preceding 24-month period prior to the application being made.

Any applications made after 24 months from the date of their Assessor training will be rejected and the applicant asked to complete the training again.