

# Award Verifier summary of temporary changes

We're determined that young people shouldn't miss out on doing their Award because of the coronavirus outbreak – and we want to do everything we can to support you so your participants can keep doing theirs, at what we know is a really challenging time.

Over the last few months you'll have seen the initiatives we've launched and the programme modifications we've made to support young people to do their Award during the pandemic.

Here's a handy re-cap of everything we've announced. Full details can be found at [DofE.org/DofEWithADifference](http://DofE.org/DofEWithADifference).

## A few reminders

### Temporary changes dates

All temporary changes apply to activities taking place after the lockdown announcement in mid-March 2020. Please check [DofE.org/DofEWithADifference](http://DofE.org/DofEWithADifference) for the most up-to-date information on the temporary changes end date.

### Frequency of activities

You may also see participants completing their activities in a larger block of time due to the nature of the task they've chosen e.g. helping at a food bank for half a day each month rather than one hour each week. Please check that the start and end date of the section meet the minimum timescale chosen, and that participants have completed sufficient hours of activity during that time. As a rule of thumb, Bronze is 13 hours, Silver is 26 hours and Gold is 52 hours.

### Assessors

The Assessor still needs to be independent and cannot be a family member.

### Certificate of Achievement

Even if a participant receives the Certificate of Achievement, you can still query a completed section and request changes to be made before the section(s) can be completed and the Award achieved.



## All sections

### What are the temporary changes that apply to all sections?

Participants can change their section activities more than once. Due to the pandemic, we know many participants have changed to activities they can do from home.

### What should I look out for when verifying the whole Award?

There may be multiple Assessor's Reports for each section which you will be able to view by clicking on 'show/hide evidence' when verifying an Award.

There may also be text evidence detailing changes of activities.

The total time for all reports added together needs to reach the minimum timescale for the section.

## Volunteering section

### What are the temporary changes that apply to the Volunteering section?

Participants can volunteer for family members, for example by mentoring younger siblings.

### What should I look out for when verifying the Volunteering section?

It is important that the activity goes beyond 'normal household chores'. For example, participants may have mentored a younger sibling, organised activities for the family such as sports or arts and crafts, or coached a family member to help them develop a new skill. This can be confirmed by viewing the participant's goal for the section, as well as reviewing any evidence and Assessor's Reports.

A relative may have signed an activity log or provided additional written / photographic evidence, but the Assessor's Report still needs to be written by an Assessor who is not a family member.

## Physical section

### What are the temporary changes that apply to the Physical section?

We haven't made any rule changes to the Physical section. Please refer to the overall changes above.

### What should I look out for when verifying the Physical section?

We haven't made any rule changes to the Physical section, but you might expect to see participants doing activities at home, either individually or with family.

## Skills section

### What are the temporary changes that apply to the Skills section?

We haven't made any rule changes to the Skills section. Please refer to the overall changes above.

### What should I look out for when verifying the Skills section?

We haven't made any rule changes to the Skills section, but you might expect to see participants doing activities at home, either individually or with family.

## Expedition section

### What are the temporary changes that apply to the Expedition section?

Expeditions might use one or more of the following temporary changes:

1. Bronze participants who progress to Silver can use their Silver practice expedition as their Bronze qualifying expeditions. Similarly, Silver participants who progress to Gold can use their Gold practice expedition as their Silver qualifying expedition.
2. At Silver and Gold, practice and qualifying expeditions can be back-to-back.
3. Expeditions can take place in the local area at any level.
4. Leaders can use motorised transport to take participants to the start point and pick them up at the end point each day.
5. Participants can return home to sleep each night during their expedition.
6. Expedition Assessors can be known to the group at all levels.

### What should I look out for when verifying the Expedition section?

For combined practice/qualifying expeditions, you may see an Assessor's Report as normal. However, you may instead see the following text from an Expedition Supervisor which is also acceptable: 'This was a hybrid expedition due to COVID-19. Additional information can be viewed under the practice expedition of the higher level.' There is no requirement for you to check the higher level practice expedition evidence.

Be aware that the dates for the practice and qualifying expeditions may be much closer together than in previous years.

Gold expeditions are permitted in the local area. In addition, notification numbers are no longer required for Wild Country expeditions so you do not need to check that a number has been provided.

As an example, a hybrid Silver/Gold expedition may look like this on eDofE:

<b>Expedition</b> <i>Draft</i>	Status:	T P Q A M ?
Training:	Approved	
Practice expeditions:	1 (Click here to view)	
Maps created:	0	
<b>Qualifying Expedition</b>		Delete Qualifying
Team:		Start date: 08/11/2020
Location:	Silver/Gold hybrid	
Start point:	XX 999 999	End point:
Mode of travel:	Walking	
Days:	4	
Journeying:	4,4,4,4	Exploring: 4,4,4,4
Aim:	COVID-19 hybrid Silver/Gold expedition	
Personal Goals:		Qualifying status: Approved
Presented to:	Supervisor	Role: Supervisor
Date:	17/11/2020	Style: Over Zoom

**Assessor's report**  
This was a hybrid Silver/Gold expedition due to COVID-19. Additional information can be viewed under the Hybrid expedition evidence.  
Show or hide evidence

## Expedition section – expeditions in restricted spaces

### What are the temporary changes that apply to the Expedition section?

In addition, we have launched a model that allows expeditions to be run in restricted spaces e.g. school or youth group grounds. Participants may be using exercise equipment e.g. treadmills to complete their journeying time, or they may be taking part in a series of physically active navigation-style team challenges.

### What should I look out for when verifying the Expedition section?

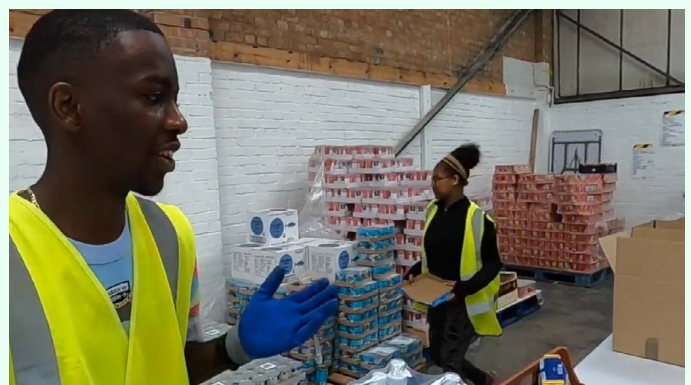
Leaders and Managers have been asked to enter 'Other' under 'Mode of travel' in the expedition details.

The evidence or Assessor's Report will refer to participants either using exercise equipment or completing team challenges within a restricted space. You should still expect to see comments about the progress made, including information about soft skills gained.

It is likely that a greater proportion of the planned activity time will be spent investigating the aim – remember that the split can be up to 50:50 between journeying and investigating the aim.

If participants complete their practice expedition in a restricted outdoor space, they should also complete their qualifying expedition in a restricted outdoor space.

Any of the temporary changes mentioned above also apply to this model.



An expedition that took place in a restricted space may look like this on eDofE:

<b>Expedition</b> Draft	Status:	T P Q A S M ?	
Training:	Approved		
Practice expeditions:	1 (Click <a href="#">here</a> to view)		
Maps created:	0		
<b>Qualifying Expedition</b>			
Team:	Start date:	10/11/2020	
<a href="#">Delete Qualifying</a>			
Location:	Restricted spaces model - youth group grounds		
Start point:	WR14 4JH	End point:	
Mode of travel:	Other		
Days:	4		
Journeying:	4,4,4,4	Exploring:	4,4,4,4
Aim:	Decided individually by groups		
Personal Goals:	Qualifying status:	Approved	
Presented to:	Supervisor	Role:	Supervisor
Date:	17/11/2020	Style:	Over Zoom

**Assessor's report**

This participant was wonderful throughout the restricted spaces expedition - they contributed well to the Restricted spaces model

[Show or hide evidence](#)



### What should I look out for when verifying the Residential section?

You may see the above details in the Residential section approval form, evidence or the Assessor's Report.

If the participant has completed both parts of their residential with the same provider, there may only be one Assessor's Report. Otherwise, you may see two Assessor's Reports.

For a split residential, participants should aim to arrive before dinner on the first evening and leave after 3pm on the last evening. Both parts must be complete within one year. Participants should be taking part in the same type of activity over each weekend, but each part can be with different people.

## Residential section

### What are the temporary changes that apply to the Residential section?

Residentials can be run with a minimum of four participants.

The residential experience can be split over two weekends if needed.

Participants can go home at night to sleep.

