

Support for

STRATEGIC PARTNERS



**THE DUKE OF EDINBURGH'S AWARD (DOFE)
ACCESS WITHOUT LIMITS: SUPPORT FOR
STRATEGIC PARTNERS**



**YOUTH
WITHOUT
LIMITS**



Funded by
UK Government

Fund OVERVIEW



As young people face up to today's challenges, we know the DofE has never been more needed.

In line with our strategy, **Youth Without Limits**, we are committed to ensuring that the DofE is open to all young people and that our participants reflect the most diverse generation of young people ever.

To tackle barriers to participation, we are working with strategic partners within the youth and sport sectors to establish a sustainable DofE offer throughout their networks supported by funding from Department for Media, Culture and Sport (DCMS).

This funding is now open for applications. The fund offers grant funding of up to £10,250 for eligible youth and sport sector organisations to set up and deliver the DofE, including the enrolment costs for marginalised young people across the UK.

Who will this fund support?

→ This fund will support VCO organisations that meet the following eligibility criteria:

- Organisations must form part of a **national or regional network of not-for-profit organisations** supporting young people.
- Organisations/groups must be an incorporated **Voluntary, Community or Social Enterprise Organisation**, that has been established for at least one year. Examples include Charitable Incorporated Organisations (CIO) and Charitable Companies Limited by Guarantee.
- Organisations must have a **bank account** in the organisation's name, with two or more unrelated signatories and any reserves accrued by organisations are reinvested to support your work (i.e. not for profit). You will also need to be able to provide copies of your most recent annual accounts.
- Applicants must be able to meet the requirements of a **DofE Licensed Organisation** and will be required to sign a Directly Licensed Centre (DLC) agreement or be part of an Operating Authority (OA) licence.
- Each organisation will require a **designated Licence signatory and DofE Manager**, both will receive dedicated support from an Operations Officer to help them get the programme up and running with support every step of the way.
- Please note that as a part of the process, organisations will need to undergo a **due diligence check** and will be asked to produce documentation, including safeguarding policies and profit and loss accounts.

For full details of eligibility criteria, please visit our funding webpage **Access Without Limits – Strategic Partners Fund – The Duke of Edinburgh's Award (dofe.org)** or contact lucy.fisher@dofe.org



→ What does this fund support?



Eligible organisations (once licensed) can apply for up to £10,250. Our Operations Team will support you to develop your project and develop a proposal for what the fund will be used for.

The funding package can include:

DofE Licence Fee Support

Funded Bronze, Silver and Gold Participation Places

Bursaries for Adult Leader Training Courses

This could be for sectional activities, first aid, safeguarding or qualifications related to the outdoors.

Sectional Equipment Support

Funding can be used to support equipment for any DofE section (Expedition, Skill, Physical, Volunteering, Residential)

Internal Staff Costs

We will support staff costs as part of the grant up to a maximum of one third of the available funding. The costs should be reasonable and offer good value for money.

Expedition Bursary Funding

To support the costs of an Approved Activity Provider (AAP) to run the expedition section up to a maximum of £100 per DofE participant.

Additional detail of what can be included can be found in our grant making guidance and in Appendix 1 of this document.

Key dates

→ The fund **opened** for applications in August 2023.

→ The fund will **close** to applications on 31 January 2025.



Licensed Organisation Application Process

The DofE in numbers

April 2022 - March 2023

Step 1

Contact your DofE Operations Officer to find out more.

Step 2

If eligible, complete the DofE Licence Due Diligence process.

Step 3

Once the Due Diligence process is complete, apply for a DofE Licence.

Step 4

Once you have a DofE Licence, fill in the grant application form with support from your Operations Officer.

Step 5

Submit your application form using the guidance document, which your operations officer will supply. You will also need to read and confirm that you agree to the DofE's Terms and Conditions.

Step 6

If successful, use your grant in line with the agreement, making sure you keep copies of all receipts/invoices.

Step 7

Complete an interim and final report by the dates stated on your application form.

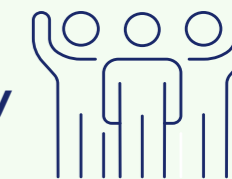
Reporting requirements

The reports will ask how your organisation has used the grant to support young people from marginalised backgrounds to do their DofE and the impact this has had. We will also ask for a financial report, for which you will need to supply copies of receipts and invoices.

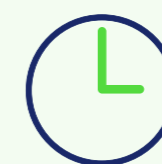
Further support

Please contact your DofE Operations Officer or Lucy Fisher, Partnerships Manager (lucy.fisher@dofe.org) for further guidance or support.

537,759 Young people actively doing their DofE



323,676
Young people started their DofE journey



3,541,707
Total volunteering hours given by young people



£17,035,611
Estimated total value of volunteering hours given in support of others

29.9%
Of 14 year olds in the UK started a Bronze DofE

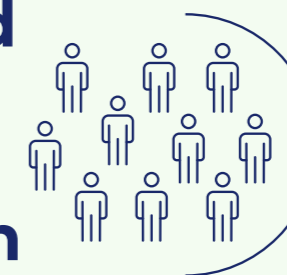


38,888
Leaders and volunteers delivering DofE programmes



4,520
Licensed Organisations actively delivering the DofE

Awards started by young people facing marginalisation



49,680 (15.3%)
Experiencing poverty

81,460 (25.2%)
From minority ethnic backgrounds

22,456 (6.9%)
Have additional needs

AWARDS STARTED

☆
228,251 Bronze

☆☆
70,942 Silver

☆☆☆
24,483 Gold



144,919
Awards were achieved



Appendix 1:

Details on how the grant can be used



→ DofE Licence Fee/Service Level Agreement Support

- Organisations can apply for funding to support their 2023/24 and 2024/25 licence fees. Organisations can apply for 100% of their licence fee in Year 1 and (if applicable) up to 50% in year 2.

→ Funded Participation Places

- There is no limit on the number of participation places a Licensed Organisation can apply for. Please state how many places are required in the application form.
- Please note that whilst we will ask for a figure in the budget for participation places, we will allocate the participation places directly to the organisation's eDofE account, rather than award the organisation the funds via BACS.

→ Equipment

- Funding can be used to support equipment for any DofE sections, as long as it will be used by young people doing their DofE. Typically, we would not expect equipment costs to exceed £4,000 but this can be considered in exceptional circumstances.
- Applicants will need to evidence expenditure via receipts and an itemised list with their end of year report.
- All equipment purchased is owned and retained by the Licensed Organisation
- All items should be purchased within a year of receiving funding.
- We will only fund reusable equipment.

Equipment for expeditions is in line with DofE's programme requirements. Those applying for funding should check the [Expedition Kit List](#) and [Programme Ideas](#).

→ Expedition Bursary Funding (Participant Bursaries)

- This can be used to cover Approved Activity Provider (AAP) costs for delivering the Expedition section (up to £100 per participant). Further information around how to find an approved expedition provider can be found here: www.dofe.org/do/aap

→ External Adult Training Courses (Training Bursaries)

- This can be used to support external training up to a total of £500.
- This only includes training for adult leaders assigned to the License Organisation and the training courses should relate to your delivery of the DofE. (Contact your Operations Officer to discuss what training you can include).

→ Internal Staff Costs (Incidentals)

- Salary costs for permanent, fixed term or sessional staff members delivering the DofE on behalf of the Directly Licenced Centre or Centre under an Operating Authority.
- Salary costs should be at a competitive rate, and above minimum wage.
- Maximum amount of 33% of overall grant and must be tapered to build sustainability if a multi-year grant.





**YOUTH
WITHOUT
LIMITS**



Funded by
UK Government