

Access Without Limits

# GUIDANCE



THE DUKE OF EDINBURGH'S AWARD (DofE)  
**ACCESS WITHOUT LIMITS: SUPPORT FOR**  
COMMUNITY ORGANISATIONS



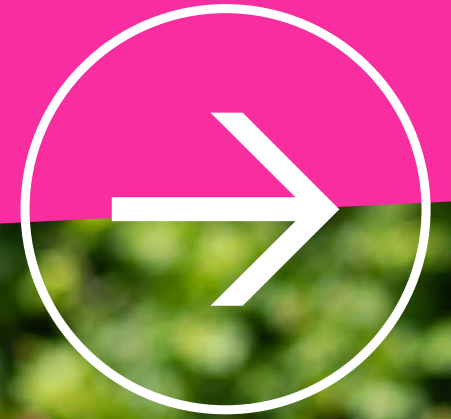
**ACCESS  
WITHOUT  
LIMITS**

THE  
JULIA AND HANS RAUSING  
TRUST



**Fund**

# OVERVIEW



As young people face up to today's challenges, we know the DofE has never been needed more.

In line with our strategy, Youth Without Limits, we are committed to ensuring that DofE is open to all young people and that our participants reflect the most diverse generation of young people ever.

To break down barriers to participation, we are offering funding to Voluntary and Community Organisations (VCOs) to establish a sustainable DofE offer, through support from Julia and Hans Rausing.

This funding is now open for applications. With the generous support of our donors, the fund offers grant funding of up to £10,250 for eligible voluntary and community organisations to set up and deliver the DofE, including the enrolment costs for marginalised young people across the UK.





# Who does this fund support?



## This fund will support VCO organisations that meet the following eligibility criteria:

- The organisation must have a track record of primarily working with marginalised young people.  
**Please see our web page for full details of the criteria:**  
<https://www.dofe.org/access-without-limits/community/>.
- Organisations/groups must be an incorporated Voluntary, Community or Social Enterprise (VCO) Organisation, that has been established for at least one year. Examples include Charitable Incorporated Organisations (CIO) and Charitable Companies Limited by Guarantee.
- Organisations must have a bank account in the organisation's name, with two or more unrelated signatories and any reserves accrued by organisations are reinvested to support your work (i.e. not for profit). You will also need to be able to provide copies of your most recent annual accounts.

- Applicants must be able to meet the requirements of a DofE Licensed Organisation (LO) and will be required to sign a Directly Licensed Centre (DLC) agreement or be part of an operating authority (OA) licence.
- Each organisation will require a designated Licence signatory and DofE Manager, both will receive dedicated support from an Operations Officer to help them get the programme up and running with support every step of the way.
- Please note that as a part of the process, organisations will need to undergo a due diligence check and will be asked to produce documentation, including safeguarding policies and profit and loss accounts.

**For full details of eligibility criteria, please visit our funding page: [www.dofe.org/access-without-limits/community/](https://www.dofe.org/access-without-limits/community/) or contact [georgina.harper@dofe.org](mailto:georgina.harper@dofe.org).**





# What does this fund support?

Eligible voluntary and community organisations can apply for up to £10,250. Our Operations Teams will support you to develop your project and develop a proposal for what the funds will be used for. Examples of what could be included in the funding packages are:



A contribution to the DofE Licence Fee.



Funded Participation Places for young people to enrol on DofE.



Bursaries for adult leader training courses – this could be for sectional activities, first aid, safeguarding or qualifications related to the outdoors.



A bursary for an Approved Activity Provider (AAP) to run the Expedition section for DofE participants.



Equipment that supports the sections of the DofE (Expedition, Physical, Skills or Volunteering).



Internal Staff Cost. This can be up to a maximum of one third of the available funding. The costs should be reasonable and offer good value for money.

*Additional detail of what can be included can be found in our grant making guidance and appendix 1 of this document.*

05



ACCESS WITHOUT LIMITS:  
SUPPORT FOR COMMUNITY ORGANISATIONS

# Key dates



The fund **opened** for applications in July 2022



The fund will **close** to applications on the 31st of January 2026.



06



# Application Process

## Step 1

Contact your DofE Operations Officer to find out more.

## Step 2

If you are eligible, complete the DofE Licence Due Diligence process.

## Step 3

Once the Due Diligence process is complete, apply for a DofE licence.

## Step 4

Once you have a DofE licence, fill in the grant application form with the support of your Operations Officer.

## Step 5

Submit your application form using the guidance document, which your Operations Officer will supply. You will also need to read and confirm you agree to the DofE's Terms and Conditions.

## Step 6

Your application will be reviewed, and you will receive an email from your Operations Officer confirming whether it has been successful or not.

## Step 7

If successful, use your grant in line with the agreement, making sure you keep copies of all receipts/invoices.

## Step 8

Complete an interim and end of year report by the dates stated on your application form.

### Reporting requirements

The reports will ask how your organisation has used the grant to support young people from marginalised backgrounds to do their DofE and the impact this has had. We will also ask for a financial report, for which you will need to supply copies of receipts and invoices.

### Further support:

Please contact your DofE Operations Officer or Georgina Harper, VCO Programmes Manager (Georgina.harper@dofe.org) for further guidance or support.

## Appendix 1: Additional detail of how the grant can be used:

### Licence fee Support

- Organisations can receive 100% of their licence fee in year 1, and (if applicable) 50% in year 2.

### Bronze, Silver, and Gold Participation Places:

- Organisations are encouraged to support at least 15 young people per year, but there isn't an upper limit on the number of Participation Places a Licenced Organisation (LO) can apply for.

### Participant Bursaries:

- One-off Approved Activity Provider (AAP) costs relating to the Expedition and/or Residential sections (up to £200 per participant).
- Campsite, bunkhouse, or similar fees up to a maximum of £15 per night per participant for the duration of their expedition.
- Food for the Expedition section, up to a maximum of £15 per day per participant for the duration of their expedition.
- Participant travel to/from their Expedition and/or Residential sections. Eligible costs would include a) train, bus, or taxi fares; b) mileage rates (own vehicle) at 45p/mile.

### Training Bursaries for DofE leaders:

- Limited to training for adult leaders assigned to the Licenced Organisation on eDofE.
- Training courses should relate to your DofE delivery (contact your local Operations Officer to discuss what training you can include).

### Sectional equipment:

- Can be used to cover reusable equipment that is retained by the LO and relates to sectional activities, with the following provisos:
  - Up to £200 can be used to purchase expedition equipment for DofE leaders, all other items are to be used by the young people participating in the DofE.
  - Equipment for expeditions is in line with DofE's programme requirements. Those applying for funding should check the [Expedition Kit List](#) and [Programme Ideas](#).

### Funding for Licensed Organisation Incidentals:

- Licensed Organisation (LO) Salary Costs:
  - Salary costs for permanent, fixed term or sessional staff members delivering the DofE on behalf of the Directly Licenced Centre or Centre under an Operating Authority.
  - Salary costs should be at a competitive rate, and above minimum wage.
  - Maximum amount of 33% of overall grant and must be tapered to build sustainability if a multi-year grant.

### Celebration Events:

- Licensed Organisations can use the funding to offer a celebration event for those young people that have completed their Award. This up to a maximum of £200 per Licenced Organisation per year.

### Group transport to an expedition:

- Up to a maximum of £500 per funded year can be used towards transport for expeditions (please note this maximum includes any transport costs listed under participant bursaries)
- Eligible costs would include a) minibus hire; b) mileage rates (hired vehicle) at £0.15/mile; c) mileage rates (own vehicle) at 45p/mile.

# The DofE in numbers

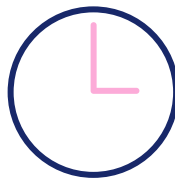
April 2022 - March 2023

**537,759** Young people actively doing their DofE



**323,676**

Young people started their DofE journey



**3,541,707**

Total volunteering hours given by young people



**£17,035,611**

Estimated total value of volunteering hours given in support of others

**29.9%**

Of 14 year olds in the UK started a Bronze DofE



**38,888**

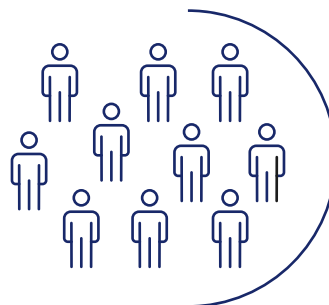
Leaders and volunteers delivering DofE programmes



**4,520**

Licensed Organisations actively delivering the DofE

**Awards started by young people facing marginalisation**



**49,680 (15.3%)**  
Experiencing poverty

**81,460 (25.2%)**  
From minority ethnic backgrounds

**22,456 (6.9%)**  
Have additional needs

**AWARDS STARTED**

  
**228,251** Bronze

  
**70,942** Silver

  
**24,483** Gold



**144,919**  
Awards were achieved